

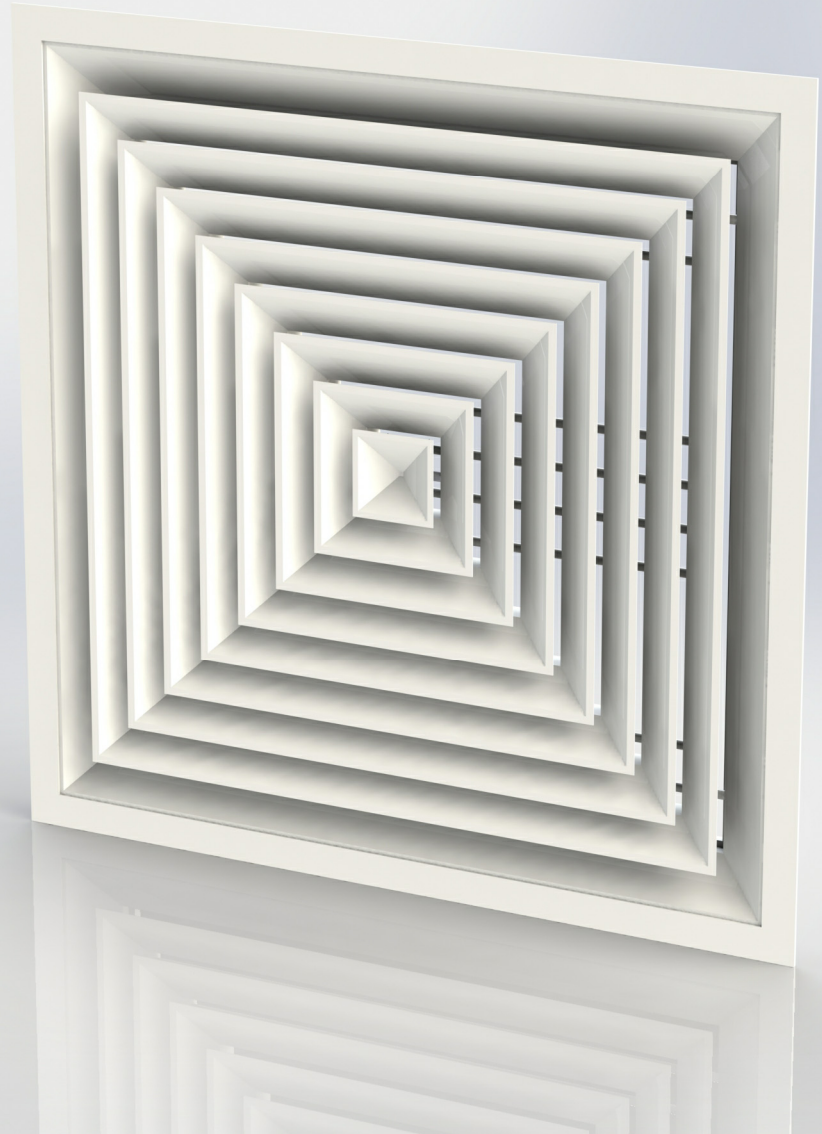
VENT DIRECT
VENTILATION DIRECT LTD

Grilles & Diffusers

Series CD

Louvre faced ceiling diffusers

- Consistently popular diffuser used in countless installations worldwide
- Effective diffusion characteristics for maximum mixing of resident and supplied air
- High quality extruded aluminium construction
- Popular sizes held in stock for immediate despatch



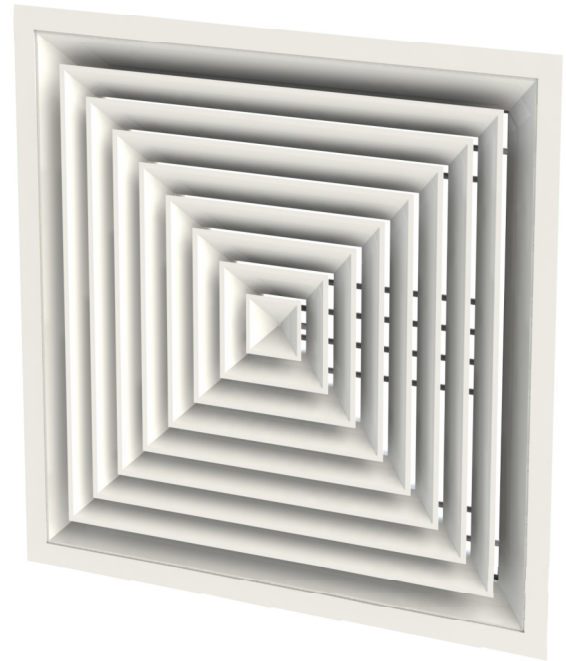
Series CD

Used in countless installations throughout the world, louvre faced ceiling diffusers are a consistently popular product, well regarded due to their architectural appearance and high performance diffusion characteristics.

Vent Direct Series CD ceiling diffusers make use of lightweight aluminium extrusions with fully mitred corners, and are of a higher quality than many cheaper pressed units.

We hold large quantities of popular sizes of CD4 in stock, giving us the capability to supply even the largest orders on a next day basis.

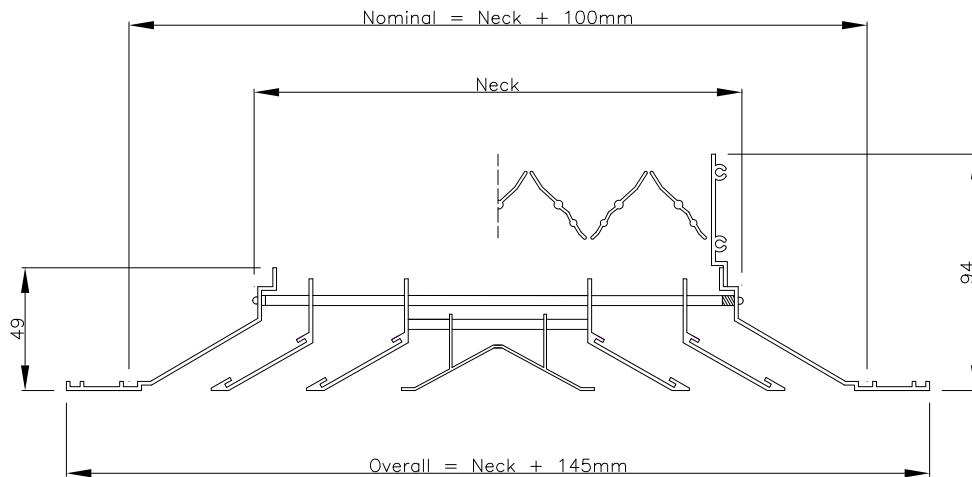
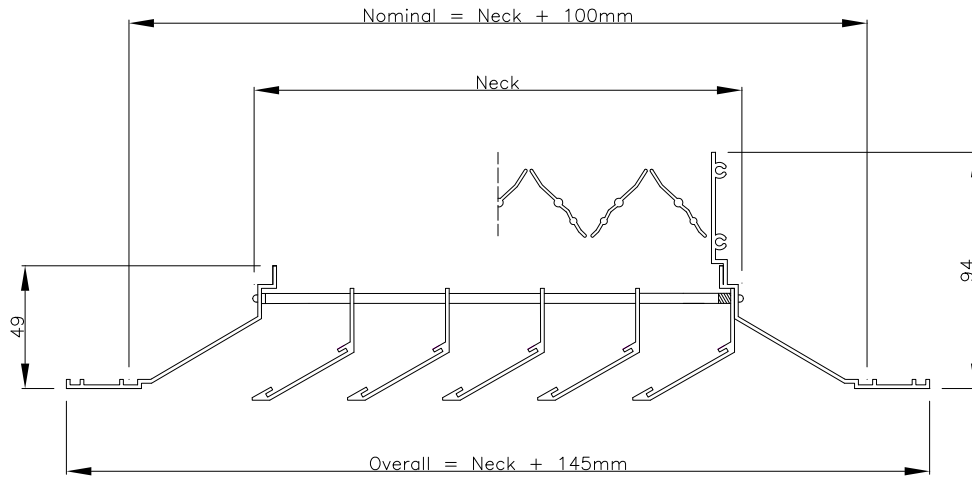
For non standard sizes, units are manufactured to order in any size and with any blow pattern.



Design features

Material	Extruded aluminium frame and blades
Construction	Fully welded with pressed in corners in frames Blade rings crimped onto aluminium tubes
Sizes	Minimum: 150mm x 150mm Maximum single unit: 2900mm x 2900mm Important note: Unless stated Series CD diffuser sizes relate to the diffuser neck, not the nominal. Please see page 3 for more details.
Fixings	Standard: None Optional: Countersunk face fixing holes
Finish	Standard: Mill aluminium Optional: See page 18 Stock units are powder coated RAL9010
Mass/m² face area	8.5 kg 16 kg including opposed blade damper

Technical drawings

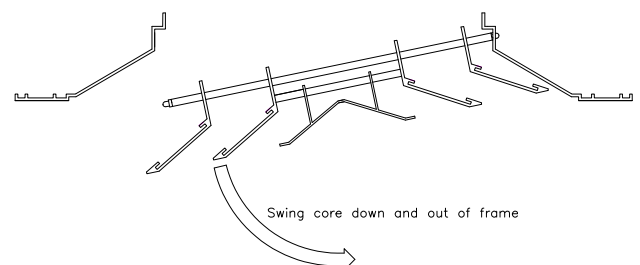
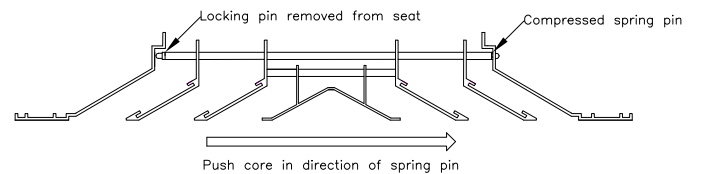


Removable cores

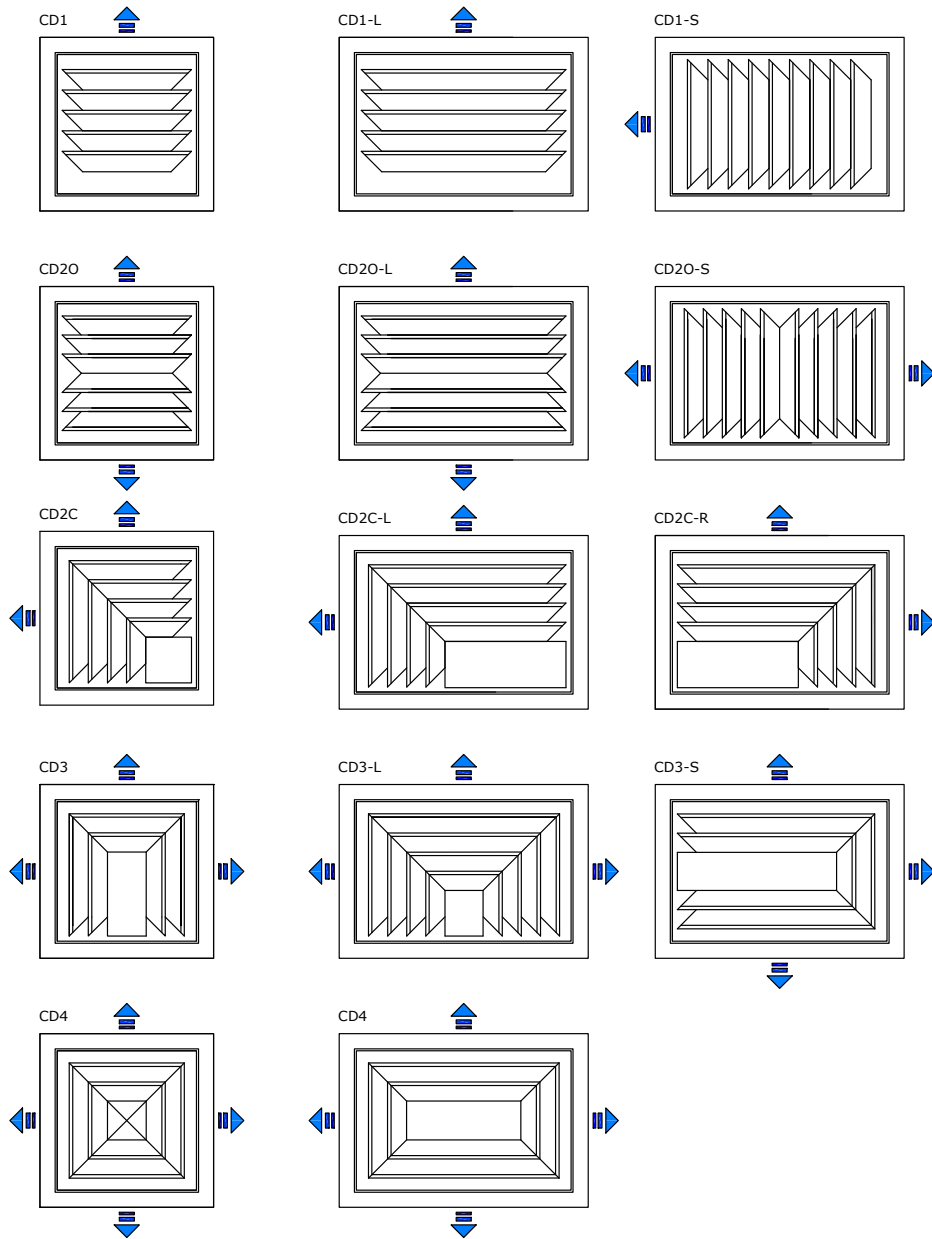
Series CD louvre faced diffusers are equipped with removable cores on all units below or equal to 650mm x 650mm neck size. Cores are removable by pushing the core to one side to compress spring pins.

Above this size, cores will be fixed into the outer frame for safety.

All removable cores are equipped with safety wire to prevent the core being able to fall away from the outer frame entirely.



Core formats



Stocked sizes

The following sizes of Series CD4 louvre faced diffusers are held in stock, with and without fitted opposed blade dampers, and in RAL9010 finish, available for immediate despatch.

150mm²
 200mm²
 225mm²
 250mm²
 300mm²
 350mm² (495mm² overall face size tile replacer)
 375mm²
 450mm² (595mm² overall face size tile replacer)

All sizes are neck unless stated.

Product codes: CD4 - RAL9010
 (diffuser only)

CD4 - D - RAL9010
 (diffuser complete with fitted opposed blade damper)

Options

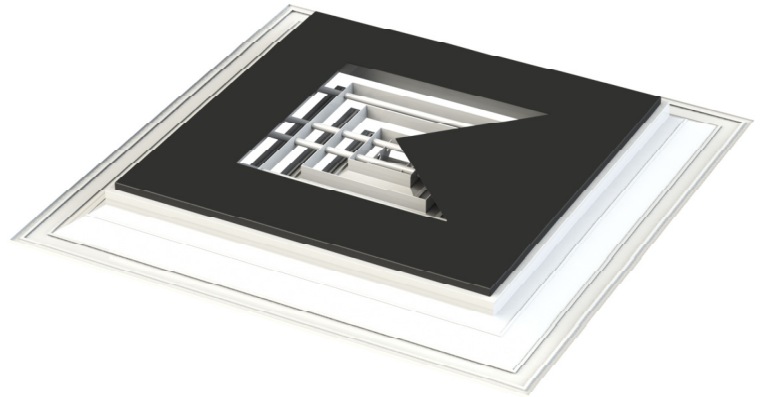
Neck reducer / blanking plates

Neck reducer / blanking plates are required when the necessary size and design of a unit does not match the required performance.

For example:

An installation demands the use of tile replacer (595mm x 595mm overall) size CD4 diffusers, but the actual required performance is closer to that of a 250mm x 250mm CD3 (3 way blow).

A blanking plate as shown here will be manufactured to the required size and pattern and will be factory fitted to the rear of the diffuser, giving both the required appearance and performance.



Fixings

Countersunk face fixing holes - FH

5.7mm countersunk fixing holes will be punched into the diffuser frame before powder coating, allowing quick and easy fitting on site.

Number and layout of fixing holes will be appropriate to diffuser size. Arrangements can be specified.

Supplied with pozidrive self tapping screws in the same finish as the diffuser.



Burgess tile - BT

The diffuser will be factory fitted into a burgess tile.

Fitting involves clipping the tile into place in a prefitted burgess clip system.

CD diffusers can be fitted into other ceiling tile systems. Please contact us for more information and to discuss your requirements.



Selection data - CD1 and CD1-S

CD1							
SIZE(w x h)	AK m sq.	NECK VELOCITY m/s	1.5	2	2.5	3	3.5
		Total Pd mm w.g.	0.9	1.5	2.3	3.3	4.3
150 x 150	0.0097	m cub/sec	0.0361	0.0472	0.0597	0.0708	0.0833
		Throw min-max (m)	0.9 - 2.4	1.2 - 2.8	1.5 - 3.0	2.2 - 3.4	2.5 - 3.7
		Noise (dB)			20	24	28
225 x 225	0.0219	m cub/sec	0.0805	0.1069	0.1319	0.1611	0.1861
		Throw min-max (m)	1.5 - 3.7	2.1 - 4.3	2.4 - 4.6	3.1 - 5.2	3.7 - 5.5
		Noise (dB)		20	25	29	32
300 x 300	0.039	m cub/sec	0.1416	0.1888	0.2361	0.2833	0.3305
		Throw min-max (m)	2.2 - 4.9	2.8 - 5.5	3.4 - 6.4	4.0 - 6.7	4.6 - 7.3
		Noise (dB)		23	28	32	35
375 x 375	0.0609	m cub/sec	0.2222	0.2958	0.368	0.4444	0.5166
		Throw min-max (m)	2.5 - 6.1	3.4 - 7.0	4.3 - 8.0	4.9 - 8.6	5.8 - 9.2
		Noise (dB)		25	30	34	37

CD1-S							
SIZE(w x h)	AK m sq.	NECK VELOCITY m/s	1.5	2	2.5	3	3.5
		Total Pd mm w.g.	0.9	1.5	2.3	3.3	4.3
225 x 150	0.0147	m cub./sec.	0.0541	0.0708	0.0902	0.1069	0.125
		Throw min-max (m)	1.8 - 4.3	2.4 - 4.9	3.0 - 5.5	3.3 - 5.8	3.9 - 6.4
		Noise (dB)			23	27	30
300 x 225	0.0292	m cub./sec.	0.1083	0.1416	0.1791	0.2125	0.25
		Throw min-max (m)	2.4 - 5.8	3.3 - 6.7	3.9 - 7.6	4.9 - 8.6	5.8 - 9.2
		Noise (dB)		22	27	30	34
375 x 300	0.0487	m cub/sec	0.1777	0.2361	0.2958	0.3541	0.4138
		Throw min-max (m)	3.1 - 7.6	4.3 - 8.8	5.2 - 9.8	6.4 - 10.9	7.3 - 11.6
		Noise (dB)		24	29	33	36

Selection data - CD1-L

CD1-L							
SIZE(w x h)	AK m sq.	NECK VELOCITY m/s	1.5	2	2.5	3	3.5
		Total Pd mm wg	0.9	1.5	2.3	3.3	4.3
225 x 150	0.0147	m cub/sec	0.0541	0.0708	0.0902	0.1069	0.125
		Throw min-max (m)	1.8 - 4.3	2.4 - 4.9	3.0 - 5.5	3.3 - 5.8	4.0 - 6.4
		Noise (dB)			23	27	30
300 x 150	0.0195	m cub/sec	0.0708	0.0944	0.118	0.1416	0.1652
		Throw min-max (m)	2.2 - 4.9	2.8 - 5.5	3.4 - 6.4	4.0 - 6.7	4.6 - 7.3
		Noise (dB)			24	28	32
375 x 150	0.0244	m cub/sec	0.0902	0.118	0.1486	0.1777	0.2083
		Throw min-max (m)	2.2 - 5.5	3.0 - 6.4	3.7 - 7.0	4.6 - 7.6	5.2 - 8.3
		Noise (dB)		20	26	29	33
450 x 150	0.0292	m cub/sec	0.1083	0.1416	0.1791	0.2125	0.25
		Throw min-max (m)	2.5 - 5.8	3.4 - 6.7	4.0 - 7.6	4.9 - 8.6	5.8 - 9.2
		Noise (dB)		22	27	30	34
300 x 225	0.0292	m cub/sec	0.1083	0.1416	0.1791	0.2125	0.25
		Throw min-max (m)	2.5 - 5.8	3.4 - 6.7	4.0 - 7.6	4.9 - 8.6	5.8 - 9.2
		Noise (dB)		22	27	30	34
375 x 225	0.0367	m cub/sec	0.1319	0.1763	0.2222	0.2666	0.3125
		Throw min-max (m)	2.8 - 6.7	3.7 - 7.6	4.6 - 8.6	5.5 - 9.5	6.4 - 10.0
		Noise (dB)		22	27	32	35
525 x 225	0.0511	m cub/sec	0.1861	0.2486	0.3097	0.3708	0.4319
		Throw min-max (m)	3.4 - 8.0	4.3 - 9.2	5.5 - 10.0	6.4 - 11.0	7.7 - 11.9
		Noise (dB)		24	29	33	37
375 x 300	0.0487	m cub/sec	0.1777	0.2361	0.2958	0.3541	0.4138
		Throw min-max (m)	3.1 - 7.6	4.3 - 8.9	5.2 - 9.8	6.4 - 11.0	7.3 - 11.6
		Noise (dB)		24	29	33	36
450 x 300	0.0585	m cub/sec	0.2125	0.2833	0.3541	0.425	0.4958
		Throw min-max (m)	3.4 - 8.6	4.6 - 9.8	5.8 - 11.0	7.1 - 11.9	8.0 - 12.8
		Noise (dB)		25	30	33	37
525 x 300	0.0683	m cub/sec	0.2486	0.3305	0.4138	0.4958	0.5791
		Throw min-max (m)	3.7 - 9.2	4.9 - 10.4	6.1 - 11.6	7.4 - 12.8	8.9 - 13.7
		Noise (dB)	20	26	30	34	37

Selection data - CD20 and CD20-S

CD20							
SIZE	AK m sq.	NECK VELOCITY m/s	1.5	2	2.5	3	3.5
		Total Pd mm wg	0.9	1.5	2.3	3.3	4.3
150 x 150	0.0097	m cub/sec	0.0361	0.0472	0.0597	0.0708	0.0833
		Throw min-max (m)	0.9 - 2.4	1.2 - 2.8	1.5 - 3.0	2.2 - 3.4	2.5 - 3.7
		Noise (dB)			20	24	28
225 x 225	0.0219	m cub/sec	0.0805	0.1069	0.1319	0.1611	0.1861
		Throw min-max (m)	1.5 - 3.7	2.1 - 4.3	2.4 - 4.6	3.1 - 5.2	3.7 - 5.5
		Noise (dB)		20	25	29	32
300 x 300	0.039	m cub/sec	0.1416	0.1888	0.2361	0.2833	0.3305
		Throw min-max (m)	2.2 - 4.9	2.8 - 5.5	3.4 - 6.4	4.0 - 6.7	4.6 - 7.3
		Noise (dB)		23	28	32	35
375 x 375	0.0609	m cub/sec	0.2222	0.2958	0.368	0.4444	0.5166
		Throw min-max (m)	2.5 - 6.1	3.4 - 7.0	4.3 - 8.0	4.9 - 8.6	5.8 - 9.2
		Noise (dB)		25	30	34	37
450 x 450	0.0878	m cub./sec.	0.3194	0.425	0.5319	0.6375	0.7444
		Throw min-max (m)	3.1 - 7.3	4.0 - 8.6	4.9 - 9.5	6.1	7.1 - 11.0
		Noise (dB)	21	27	32	35	39
525 x 525	0.12	m cub./sec.	0.4347	0.5791	0.7222	0.8694	1.0138
		Throw min-max (m)	3.4 - 8.6	4.6 - 9.8	5.8 - 11.0	7.1 - 11.9	8.3 - 12.8
		Noise (dB)	22	28	34	37	41

CD20-S							
SIZE	AK m sq.	NECK VELOCITY m/s	1.5	2	2.5	3	3.5
		Total Pd mm wg	0.9	1.5	2.3	3.3	4.3
225 x 150	0.0097	m cub/sec	0.0361	0.0472	0.0597	0.0708	0.0833
		Throw min-max (m)	0.9 - 2.4	1.2 - 2.8	1.5 - 3.0	2.2 - 3.4	2.5 - 3.7
		Noise (dB)			20	24	28
300 x 150	0.0195	m cub/sec	0.0708	0.0944	0.118	0.1416	0.1652
		Throw min-max (m)	1.5 - 4.3	1.8 - 4.0	2.4 - 4.3	2.7 - 4.9	3.3 - 5.2
		Noise (dB)			24	28	32
300 x 225	0.0292	m cub/sec	0.1083	0.1416	0.1791	0.2125	0.25
		Throw min-max (m)	1.8 - 4.3	2.4 - 4.9	3.0 - 5.5	3.3 - 5.8	3.9 - 6.4
		Noise (dB)		22	27	30	34
375 x 225	0.0367	m cub/sec	0.1319	0.1777	0.2222	0.2666	0.3125
		Throw min-max (m)	1.8 - 4.6	2.4 - 5.5	3.3 - 6.1	3.9 - 6.7	4.5 - 7.3
		Noise (dB)		22	27	32	35
375 x 300	0.0487	m cub./sec.	0.1777	0.2361	0.2958	0.3541	0.4138
		Throw min-max (m)	2.8 - 5.5	3.2 - 6.4	4.0 - 7.0	4.6 - 8.0	5.2 - 8.6
		Noise (dB)		24	29	33	36

Selection data - CD20-L

CD20-L							
SIZE	AK m sq.	NECK VELOCITY m/s	1.5	2	2.5	3	3.5
		Total Pd mm wg	0.9	1.5	2.3	3.3	4.3
225 x 150	0.0147	m cub/sec	0.0541	0.0708	0.0902	0.1069	0.125
		Throw min-max (m)	1.2 - 3.1	1.5 - 3.4	2.1 - 4.0	2.4 - 4.2	2.7 - 4.6
		Noise (dB)			23	27	30
300 x 150	0.0195	m cub/sec	0.0708	0.0944	0.118	0.1416	0.1652
		Throw min-max (m)	1.5 - 3.4	1.8 - 4.0	2.4 - 4.3	2.7 - 4.9	3.3 - 5.2
		Noise (dB)			24	28	32
375 x 150	0.0244	m cub/sec	0.0902	0.118	0.1486	0.1777	0.2083
		Throw min-max (m)	1.5 - 4.3	2.1 - 4.9	2.7 - 5.2	3.0 - 5.8	3.6 - 6.4
		Noise (dB)		20	26	29	33
450 x 150	0.0292	m cub/sec	0.1083	0.1416	0.1791	0.2125	0.25
		Throw min-max (m)	1.8 - 4.3	2.4 - 4.9	3.0 - 5.5	3.3 - 5.8	4.0 - 6.4
		Noise (dB)		22	27	30	34
300 x 225	0.0292	m cub./sec.	0.1083	0.1416	0.1791	0.2125	0.25
		Throw min-max (m)	1.8 - 4.3	2.4 - 4.9	3.0 - 5.5	3.3 - 5.8	4.0 - 6.4
		Noise (dB)		22	27	30	34
375 x 225	0.0367	m cub./sec.	0.1319	0.1763	0.2222	0.2666	0.3125
		Throw min-max (m)	1.8 - 4.6	2.4 - 5.5	3.4 - 6.1	4.0 - 6.7	4.6 - 7.4
		Noise (dB)		22	27	32	35
525 x 225	0.0511	m cub./sec.	0.1861	0.2486	0.3097	0.3708	0.4319
		Throw min-max (m)	2.8 - 5.5	3.1 - 6.4	4.0 - 7.0	4.6 - 8.0	5.2 - 8.6
		Noise (dB)		24	29	33	37
375 x 300	0.0487	m cub./sec.	0.1777	0.2361	0.2958	0.3541	0.4138
		Throw min-max (m)	2.8 - 5.5	3.1 - 6.4	4.0 - 7.0	4.6 - 8.0	5.2 - 8.6
		Noise (dB)		24	29	33	36
450 x 300	0.0585	m cub./sec.	0.2125	0.2833	0.3541	0.425	0.4958
		Throw min-max (m)	2.5 - 5.8	3.4 - 6.7	4.0 - 7.6	4.9 - 8.6	5.8 - 9.2
		Noise (dB)		25	30	33	37
525 x 300	0.0683	m cub./sec.	0.2486	0.3305	0.4138	0.4958	0.5791
		Throw min-max (m)	2.7 - 6.4	3.7 - 7.3	4.3 - 8.3	5.2 - 9.2	6.1 - 9.8
		Noise (dB)	20	26	30	34	37
450 x 375	0.0732	m cub./sec.	0.2666	0.3451	0.4444	0.5336	0.6208
		Throw min-max (m)	2.8 - 6.7	3.7 - 7.7	4.6 - 8.6	5.5 - 9.5	6.4 - 10.1
		Noise (dB)	20	26	31	35	38

Selection data - CD2C

CD2C							
SIZE	AK m sq.	NECK VELOCITY m/s	1.5	2	2.5	3	3.5
		Total Pd mm wg	0.9	1.5	2.3	3.3	4.3
150 x 150	0.0097	m cub/sec	0.0361	0.0472	0.0597	0.0708	0.0833
		Throw min-max (m)	0.9 - 2.5	1.2 - 2.8	1.6 - 3.0	2.2 - 3.4	2.5 - 3.7
		Noise (dB)			20	24	28
225 x 225	0.0219	m cub/sec	0.0805	0.1069	0.1319	0.1611	0.1875
		Throw min-max (m)	1.6 - 3.7	2.2 - 4.3	2.5 - 4.6	3.0 - 5.2	3.4 - 5.5
		Noise (dB)		20	25	29	32
300 x 300	0.039	m cub/sec	0.1416	0.1888	0.2361	0.2833	0.3305
		Throw min-max (m)	2.2 - 4.9	2.8 - 5.5	3.4 - 6.4	4.0 - 6.7	4.6 - 7.4
		Noise (dB)		23	28	32	35
375 x 375	0.0609	m cub/sec	0.2222	0.2958	0.3694	0.4444	0.518
		Throw min-max (m)	2.5 - 6.1	3.4 - 7.1	4.3 - 8.0	4.9 - 8.6	5.8 - 9.2
		Noise (dB)		25	30	34	37
450 x 450	0.0878	m cub./sec.	0.3194	0.425	0.5319	0.6375	0.7444
		Throw min-max (m)	3.1 - 7.4	4.0 - 8.6	4.9 - 9.5	6.1 - 10.4	7.1 - 11.0
		Noise (dB)	21	27	32	35	39

Selection data - CD2C-L and CD2C-R

CD2C-L / CD2C-R							
SIZE	AK m sq.	NECK VELOCITY m/s	1.5	2	2.5	3	3.5
		Total Pd mm wg	0.9	1.5	2.3	3.3	4.3
225 x 150	0.0147	m cub./sec.	0.0541	0.0708	0.0902	0.1069	0.125
		Throw min-max (m) Shorter side	0.9 - 2.5	1.3 - 2.8	1.9 - 3.1	2.2 - 3.4	2.5 - 3.7
		Throw min-max (m) Longer side	1.6 - 3.4	1.9 - 4.0	2.5 - 4.3	2.8 - 4.9	3.4
		Noise (dB)			23	27	30
300 x 150	0.0195	m cub./sec.	0.0708	0.0944	0.118	0.1416	0.1652
		Throw min-max (m) Shorter side	0.9 - 2.5	1.3 - 2.8	1.9 - 3.1	2.2 - 3.4	2.5 - 3.7
		Throw min-max (m) Longer side	1.9 - 4.3	2.5 - 4.9	2.8 - 5.5	3.4 - 5.8	4.0 - 6.4
		Noise (dB)			24	28	32
375 x 150	0.0244	m cub./sec.	0.0902	0.118	0.1486	0.1777	0.2083
		Throw min-max (m) Shorter side	0.9 - 2.5	1.3 - 2.8	1.9 - 3.1	2.2 - 3.4	2.5 - 3.7
		Throw min-max (m) Longer side	2.2 - 4.9	2.8 - 5.5	3.4 - 6.4	4.0 - 6.7	4.6 - 7.4
		Noise (dB)		20	26	29	33
300 x 225	0.0292	m cub./sec.	0.1083	0.1416	0.1791	0.2125	0.25
		Throw min-max (m) Shorter side	1.6 - 3.7	1.9 - 4.3	2.5 - 4.6	3.1 - 5.2	3.4 - 5.5
		Throw min-max (m) Longer side	2.2 - 4.6	2.8 - 5.5	3.4 - 6.1	4.0 - 6.7	4.6 - 7.3
		Noise (dB)		22	27	30	34
375 x 225	0.0367	m cub./sec.	0.1319	0.1777	0.2222	0.2666	0.3125
		Throw min-max (m) Shorter side	1.6 - 3.7	1.9 - 4.3	2.5 - 4.6	3.1 - 5.2	3.4 - 5.5
		Throw min-max (m) Longer side	2.2 - 5.5	3.1 - 6.4	3.7 - 7.0	4.6 - 8.0	5.5 - 8.6
		Noise (dB)		22	27	32	35
375 x 300	0.0487	m cub./sec.	0.1777	0.2361	0.2958	0.3541	0.4138
		Throw min-max (m) Shorter side	2.2 - 4.9	2.8 - 5.5	3.4 - 6.4	4.0 - 6.7	4.6 - 7.4
		Throw min-max (m) Longer side	2.5 - 5.8	3.4 - 6.7	4.0 - 7.6	4.9 - 8.6	5.8 - 9.2
		Noise (dB)		24	29	33	36
450 x 300	0.0585	m cub./sec.	0.2125	0.2833	0.3541	0.425	0.4958
		Throw min-max (m) Shorter side	2.2 - 4.9	2.8 - 5.5	3.4 - 6.4	4.0 - 6.7	4.6 - 7.3
		Throw min-max (m) Longer side	2.8 - 6.7	3.7 - 8.0	4.6 - 8.9	5.8 - 9.8	6.7 - 10.4
		Noise (dB)		25	30	33	37
450 x 375	0.0732	m cub./sec.	0.2666	0.3451	0.4444	0.5333	0.6208
		Throw min-max (m) Shorter side	2.5 - 6.1	3.4 - 7.0	4.3 - 8.0	4.9 - 8.6	5.8 - 9.2
		Throw min-max (m) Longer side	3.1 - 7.0	4.0 - 8.3	4.9 - 9.2	5.8 - 10.1	7.0 - 11.0
		Noise (dB)	20	26	31	35	38

Selection data - CD3 and CD3-S

CD3							
SIZE	AK m sq.	NECK VELOCITY m/s	1.5	2	2.5	3	3.5
		Total Pd mm wg	0.9	1.5	2.3	3.3	4.3
150 x 150	0.0097	m cub/sec	0.0361	0.0472	0.0597	0.0708	0.0833
		Throw min-max (m)	0.7 - 1.6	0.9 - 1.9	1.3 - 2.2	1.6 - 2.5	1.6 - 2.8
		Noise (dB)					19
225 x 225	0.0219	m cub/sec	0.0805	0.1069	0.1319	0.1611	0.1861
		Throw min-max (m)	1.3 - 2.5	1.6 - 3.1	1.9 - 3.4	2.2 - 3.7	2.5 - 4.0
		Noise (dB)				23	27
300 x 300	0.039	m cub/sec	0.1416	0.1888	0.2361	0.2833	0.3305
		Throw min-max (m)	1.6 - 3.4	1.9 - 4.0	2.5 - 4.3	2.9 - 4.9	3.4 - 5.2
		Noise (dB)		20	25	29	32
375 x 375	0.0609	m cub/sec	0.2222	0.2958	0.368	0.4444	0.5166
		Throw min-max (m)	1.9 - 4.3	2.2 - 4.9	3.1 - 5.5	3.7 - 6.1	4.3 - 6.4
		Noise (dB)		24	29	33	37
450 x 450	0.0878	m cub./sec.	0.3194	0.425	0.5319	0.6375	0.7444
		Throw min-max (m)	2.2 - 5.2	2.8 - 5.8	3.7 - 6.7	4.3 - 7.4	4.9 - 8.0
		Noise (dB)	22	28	33	36	40
525 x 525	0.12	m cub./sec.	0.4347	0.5791	0.7222	0.8694	1.0138
		Throw min-max (m)	2.5 - 6.1	3.4 - 7.1	4.3 - 7.7	4.9 - 8.6	5.8 - 9.2
		Noise (dB)	25	31	36	39	43
600 x 600	0.156	m cub./sec.	0.5666	0.7555	0.9444	1.1333	13.222
		Throw min-max (m)	2.8 - .7	4.0 - 8.0	4.6 - 4.9	5.8 - 9.8	6.7 - 10.4
		Noise (dB)	27	33	38	43	46

CD3-S							
SIZE	AK m sq.	NECK VELOCITY m/s	1.5	2	2.5	3	3.5
		Total Pd mm wg	0.9	1.5	2.3	3.3	4.3
225 x 150	0.0147	m cub/sec	0.0541	0.0708	0.0902	0.1069	0.125
		Throw min-max (m) -Front	1.2 - 2.5	1.9 - 4.0	1.9 - 3.4	2.2 - 3.7	3.4 - 5.2
		Throw min-max (m) -Sides	0.9 - 2.5	1.3 - 2.8	1.6 - 3.1	1.9 - 3.4	2.2 - 3.7
		Noise (dB)			23	27	30
300 x 150	0.0195	m cub/sec	0.0708	0.0944	0.118	0.1416	0.1652
		Throw min-max (m) -Front	1.6 - 6.4	1.9 - 4.0	2.5 - 4.3	2.8 - 4.9	3.4 - 5.2
		Throw min-max (H6m) -Sides	0.9 - 2.5	1.3 - 2.8	1.6 - 3.1	1.9 - 3.4	2.2 - 3.7
		Noise (dB)			24	28	32
375 x 150	0.0244	m cub/sec	0.0902	0.118	0.1486	0.1777	0.2083
		Throw min-max (m) -Front	1.9 - 4.3	2.5 - 4.9	3.1 - 5.5	3.4 - 5.8	4.0 - 6.4
		Throw min-max (m) -Sides	0.9 - 2.5	1.3 - 2.8	1.9 - 3.1	1.9 - 3.4	2.2 - 3.7
		Noise (dB)		20	26	29	33

Selection data - CD3-S continued

CD3-S							
SIZE	AK m sq.	NECK VELOCITY m/s	1.5	2	2.5	3	3.5
		Total Pd mm wg	0.9	1.5	2.3	3.3	4.3
450 x 150	0.0292	m cub/sec	0.1083	0.1416	0.1791	0.2125	0.25
		Throw min-max (m) -Front	2.2 - 4.9	2.8 - 5.5	3.4 - 6.4	4.0 - 6.7	4.6 - 7.3
		Throw min-max (m) -Sides	0.9 - 2.5	1.3 - 2.8	1.9 - 3.1	1.9 - 3.4	2.2 - 3.7
		Noise (dB)		22	27	30	34
300 x 225	0.0292	m cub/sec	0.1083	0.1416	0.1791	0.2125	0.25
		Throw min-max (m) -Front	16 - 3.4	1.9 - 4.0	2.5 - 4.3	2.8 - 4.9	3.4 - 5.2
		Throw min-max (m) -Sides	1.6 - 3.4	1.9 - 4.0	2.5 - 4.3	2.8 - 4.9	3.4 - 5.2
		Noise (dB)		22	27	30	34
375 x 225	0.0367	m cub/sec	0.1319	0.1777	0.2222	0.2666	0.3125
		Throw min-max (m) -Front	1.9 - 4.3	2.5 - 4.9	3.1 - 5.5	3.7 - 6.1	4.3 - 6.4
		Throw min-max (m) -Sides	1.6 - 3.7	1.9 - 4.3	2.5 - 4.6	3.1 - 5.2	3.4 - 5.5
		Noise (dB)		22	27	32	35
525 x 225	0.0511	m cub/sec	0.1861	0.2486	0.3097	0.3708	0.4319
		Throw min-max (m) -Front	2.5 - 5.8	3.4 - 6.7	4.0 - 7.7	4.9 - 8.6	5.8 - 6.1
		Throw min-max (m) -Sides	1.6 - 3.7	2.2 - 4.3	2.5 - 4.6	3.1 - 5.2	3.4 - 5.5
		Noise (dB)		24	29	33	37
375 x 300	0.0487	m cub/sec	0.1777	0.2361	0.2958	0.3541	0.4138
		Throw min-max (m) -Front	1.9 - 4.3	2.5 - 4.9	3.1 - 5.5	3.7 - 6.1	4.3 - 6.4
		Throw min-max (m) -Sides	1.9 - 3.4	2.5 - 4.0	3.1 - 4.6	3.7 - 4.9	4.3 - 5.2
		Noise (dB)		24	29	33	36
450 x 300	0.0585	m cub/sec	0.2125	0.2833	0.3541	0.425	0.4958
		Throw min-max (m) -Front	2.2 - 5.2	2.8 - 5.8	3.7 - 6.7	4.3 - 7.3	4.9 - 8.0
		Throw min-max (m) -Sides	1.9 - 4.6	2.5 - 5.5	3.4 - 6.1	4.0 - 6.7	4.6 - 7.4
		Noise (dB)		25	30	33	37
450 x 375	0.0732	m cub/sec	0.2666	0.3541	0.4444	0.5333	0.6208
		Throw min-max (m) -Front	2.5 - 5.5	3.1 - 6.4	4.0 - 7.1	4.6 - 8.0	5.5 - 8.6
		Throw min-max (m) -Sides	2.2 - 5.2	2.8 - 5.8	3.7 - 6.7	4.3 - 7.3	4.9 - 8.0
		Noise (dB)	20	26	31	35	38
525 x 450	0.102	m cub/sec	0.3736	0.4958	0.6208	0.7458	0.8694
		Throw min-max (m) -Front	2.8 - 6.7	3.7 - 7.7	4.6 - 8.6	5.5 - 9.5	6.4 - 10.1
		Throw min-max (m) -Sides	2.5 - 6.1	3.4 - 7.1	4.3 - 7.7	4.9 - 8.6	5.8 - 9.2
		Noise (dB)	22	28	34	37	40

Selection data - CD3-L

CD3-L							
SIZE	AK m sq.	NECK VELOCITY m/s	1.5	2	2.5	3	3.5
		Total Pd mm wg	0.9	1.5	2.3	3.3	4.3
225 x 150	0.0147	m cub/sec	0.0541	0.0708	0.0902	0.1069	0.125
		Throw min-max (m) -Front	0.7 - 1.9	0.9 - 1.9	1.9 - 3.4	2.2 - 4.0	2.8 - 4.3
		Throw min-max (m) -Sides	1.3 - 2.8	1.6 - 3.1	1.9 - 3.4	2.2 - 4.0	2.8 - 4.3
		Noise (dB)			23	27	30
300 x 150	0.0195	m cub/sec	0.0708	0.0944	0.118	0.1486	0.1652
		Throw min-max (m) -Front	0.7 - 1.9	0.9 - 1.9	1.3 - 2.2	1.6 - 2.5	1.6 - 2.8
		Throw min-max (m) -Sides	1.3 - 3.4	1.9 - 3.7	2.2 - 4.3	2.8 - 4.6	3.2 - 4.9
		Noise (dB)			24	28	32
375 x 150	0.0244	m cub/sec	0.0902	0.118	0.1486	0.1777	0.2083
		Throw min-max (m) -Front	0.6 - 1.9	0.9 - 1.9	1.3 - 2.2	1.6 - 2.5	1.6 - 2.8
		Throw min-max (m) -Sides	1.6 - 3.7	2.2 - 4.3	2.5 - 4.6	3.1 - 5.2	3.7 - 5.5
		Noise (dB)		20	26	29	33
300 x 225	0.0292	m cub/sec	0.1083	0.1416	0.1791	0.2125	0.25
		Throw min-max (m) -Front	0.9 - 2.5	1.6 - 3.1	1.9 - 3.4	2.2 - 3.7	2.5 - 4.0
		Throw min-max (m) -Sides	1.6 - 3.7	2.2 - 4.3	2.8 - 4.9	3.1 - 5.5	3.7 - 5.8
		Noise (dB)		22	27	30	34
375 x 225	0.0367	m cub/sec	0.1319	0.1777	0.2222	0.2666	0.3125
		Throw min-max (m) -Front	0.9 - 2.5	1.6 - 3.1	1.9 - 3.4	2.2 - 3.7	
		Throw min-max (m) -Sides	1.9 - 4.3	2.5 - 4.9	3.1 - 5.5	3.6 - 6.1	4.3 - 6.7
		Noise (dB)		22	27	32	35
525 x 225	0.0511	m cub/sec	0.1861	0.2486	0.3097	0.3708	0.4319
		Throw min-max (m) -Front	1.3 - 2.5	1.6 - 3.1	1.9 - 3.4	2.3 - 3.7	2.5 - 4.0
		Throw min-max (m) -Sides	2.2 - 5.2	2.8 - 6.1	3.7 - 6.7	4.3 - 7.4	5.2 - 8.0
		Noise (dB)		24	29	33	37
375 x 300	0.0487	m cub/sec	0.1777	0.2361	0.2958	0.3541	0.4138
		Throw min-max (m) -Front	1.6 - 3.4	1.9 - 4.0	2.5 - 4.3	2.8 - 4.9	3.4 - 5.2
		Throw min-max (m) -Sides	2.2 - 4.9	2.8 - 5.8	3.4 - 6.4	4.0 - 6.7	4.6 - 7.4
		Noise (dB)					
450 x 300	0.0585	m cub/sec	0.2125	0.2833	0.3541	0.425	0.4958
		Throw min-max (m) -Front	1.6 - 3.4	1.9 - 4.0	2.5 - 4.3	2.8 - 4.9	3.4 - 5.2
		Throw min-max (m) -Sides	2.2 - 5.5	3.1 - 6.4	3.7 - 7.1	4.6 - 8.0	5.2 - 8.3
		Noise (dB)		25	30	33	37
450 x 375	0.0732	m cub/sec	0.2666	0.3541	0.4444	0.5333	0.6208
		Throw min-max (m) -Front	1.9 - 4.3	2.5 - 4.9	3.1 - 5.5	3.7 - 6.1	4.3 - 6.4
		Throw min-max (m) -Sides	2.5 - 5.8	3.4 - 6.7	4.0 - 7.7	4.9 - 8.3	5.8 - 9.2
		Noise (dB)	20	26	31	35	38
525 x 450	0.102	m cub/sec	0.3736	0.4958	0.6208	0.7458	0.8694
		Throw min-max (m) -Front	2.2 - 5.2	2.8 - 5.8	3.7 - 6.7	4.3 - 7.4	4.9 - 8.0
		Throw min-max (m) -Sides	2.8 - 7.1	4.0 - 8.0	4.9 - 8.9	5.8 - 9.8	6.7 - 10.7
		Noise (dB)	22	28	32	37	40

Selection data - CD4

CD4 - Square sizes							
SIZE	AK m sq.	NECK VELOCITY m/s	1.5	2	2.5	3	3.5
		Total Pd mm wg	0.9	1.5	2.3	3.3	4.3
150 x 150	0.0097	m cub/sec	0.0361	0.0472	0.0597	0.0708	0.0833
		Throw min-max (m)	0.7 - 1.6	0.9 - 1.9	1.3 - 2.2	1.6 - 2.5	1.6 - 2.8
		Noise (dB)					19
225 x 225	0.0219	m cub/sec	0.0805	0.1069	0.1319	0.1611	0.1861
		Throw min-max (m)	1.3 - 2.5	1.6 - 3.1	1.9 - 3.4	2.2 - 3.7	2.5 - 4.0
		Noise (dB)				23	27
300 x 300	0.039	m cub/sec	0.1416	0.1888	0.2361	0.2833	0.3305
		Throw min-max (m)	1.6 - 3.4	1.9 - 4.0	2.5 - 4.3	2.9 - 4.9	3.4 - 5.2
		Noise (dB)		20	25	29	32
375 x 375	0.0609	m cub/sec	0.2222	0.2958	0.368	0.4444	0.5166
		Throw min-max (m)	1.9 - 4.3	2.2 - 4.9	3.1 - 5.5	3.7 - 6.1	4.3 - 6.4
		Noise (dB)		24	29	33	37
450 x 450	0.0878	m cub./sec.	0.3194	0.425	0.5319	0.6375	0.7444
		Throw min-max (m)	2.2 - 5.2	2.8 - 5.8	3.7 - 6.7	4.3 - 7.4	4.9 - 8.0
		Noise (dB)	22	28	33	36	40
525 x 525	0.12	m cub./sec.	0.4347	0.5791	0.7222	0.8694	1.0138
		Throw min-max (m)	2.5 - 6.1	3.4 - 7.1	4.3 - 7.7	4.9 - 8.6	5.8 - 9.2
		Noise (dB)	25	31	36	39	43
600 x 600	0.156	m cub./sec.	0.5666	0.7555	0.9444	1.1333	1.3222
		Throw min-max (m)	2.8 - 6.7	4.0 - 8.0	4.6 - 8.9	5.8 - 9.8	6.7 - 10.4
		Noise (dB)	27	33	38	43	46

Selection data - CD4 continued

CD4							
SIZE	AK m sq.	NECK VELOCITY m/s	1.5	2	2.5	3	3.5
		Total Pd mm wg	0.9	1.5	2.3	3.3	4.3
225 x 600	0.0367	m cub/sec	0.0541	0.0708	0.0902	0.1069	0.125
		Throw min-max (m) Shorter side	0.6 - 1.9	0.9 - 1.9	1.3 - 2.2	1.6 - 2.5	1.6 - 2.8
		Throw min-max (m) Longer side	0.9 - 2.5	1.3 - 2.8	1.3 - 2.8	2.2 - 3.4	2.5 - 3.7
		Noise (dB)					23
300 x 150	0.0195	m cub/sec	0.0708	0.0944	0.118	0.1416	0.1652
		Throw min-max (m) Shorter side	0.6 - 1.9	0.9 - 1.9	1.3 - 2.2	1.6 - 2.5	1.6 - 2.8
		Throw min-max (m) Longer side	1.3 - 3.1	1.6 - 3.4	2.2	2.5 - 4.3	3.1 - 4.6
		Noise (dB)				23	27
375 x 150	0.0244	m cub/sec	0.0902	0.118	0.1486	0.1777	0.2083
		Throw min-max (m) Shorter side	0.6 - 1.9	0.9 - 1.9	1.3 - 2.2	1.6 - 2.5	1.6 - 2.8
		Throw min-max (m) Longer side	1.6 - 3.4	1.9 - 4.0	2.5 - 4.3	2.8 - 4.9	3.4 - 5.2
		Noise (dB)			20	24	28
450 x 150	0.0292	m cub/sec	0.1083	0.1416	0.1791	0.2125	0.25
		Throw min-max (m) Shorter side	0.6 - 1.9	0.9 - 1.9	1.3 - 2.2	1.6 - 2.5	1.6 - 2.8
		Throw min-max (m) Longer side	1.6 - 4.0	2.2 - 4.6	2.8 - 4.9	3.1 - 5.5	3.7 - 5.8
		Noise (dB)			22	26	30
300 x 225	0.0292	m cub/sec	0.1083	0.1416	0.1791	0.2125	0.25
		Throw min-max (m) Shorter side	0.9 - 2.5	1.6 - 3.1	1.9 - 3.4	2.2 - 3.7	2.5 - 4.0
		Throw min-max (m) Longer side	1.6 - 3.4	1.9 - 4.0	2.5 - 4.3	2.8 - 4.6	3.1 - 5.2
		Noise (dB)			22	26	30
375 x 225	0.0367	m cub/sec	0.1319	0.1777	0.2222	0.2666	0.3111
		Throw min-max (m) Shorter side	0.9 - 2.5	1.6 - 3.1	1.9 - 3.4	2.2 - 3.7	2.5 - 4.0
		Throw min-max (m) Longer side	1.6 - 4.0	2.2 - 4.6	2.8 - 5.2	3.4 - 5.5	3.7 - 6.1
		Noise (dB)		20	24	28	32
600 x 225	0.0585	m cub/sec	0.2125	0.2833	0.3541	0.425	0.4958
		Throw min-max (m) Shorter side	0.9 - 2.5	1.6 - 3.1	1.9 - 3.4	2.2 - 3.7	2.5 - 4.0
		Throw min-max (m) Longer side	2.2 - 5.5	3.1 - 6.1	3.7 - 7.1	4.3 - 7.7	5.2 - 8.3
		Noise (dB)		24	28	33	33
375 x 300	0.0489	m cub/sec	0.1777	0.2361	0.2958	0.3541	0.4138
		Throw min-max (m) Shorter side	1.6 - 3.4	1.9 - 4.0	2.5 - 4.3	2.8 - 4.9	3.4 - 5.2
		Throw min-max (m) Longer side	1.9 - 4.3	2.5 - 4.9	3.1 - 5.5	3.4 - 5.8	4.0 - 6.1
		Noise (dB)		22	27	31	34

Selection data - CD4 continued

450 x 300	0.0585	m cub/sec	0.2125	0.2833	0.3541	0.425	0.4958
		Throw min-max (m) Shorter side	1.6 - 3.4	1.9 - 4.0	2.5 - 4.3	2.8 - 4.9	3.4 - 5.2
		Throw min-max (m) Longer side	2.2 - 4.9	2.8 - 5.5	3.4 - 6.4	4.0 - 6.7	4.6 - 7.4
		Noise (dB)		24	28	33	36
525 x 300	0.0683	m cub/sec	0.2486	0.3305	0.4138	0.4958	0.5791
		Throw min-max (m) Shorter side	1.6 - 3.4	1.9 - 4.0	2.5 - 4.3	2.8 - 4.9	3.4 - 5.2
		Throw min-max (m) Longer side	2.2 - 5.5	3.1 - 6.4	6.7 - 7.1	4.6 - 7.7	5.2 - 8.3
		Noise (dB)		25	30	34	37
600 x 300	0.078	m cub/sec	0.2833	0.3777	0.4722	0.5666	0.6611
		Throw min-max (m) Shorter side	1.9 - 3.4	1.9 - 4.0	2.5 - 4.3	2.8 - 4.9	3.4 - 5.2
		Throw min-max (m) Longer side	2.5 - 5.8	3.4 - 6.7	4.0 - 7.7	4.9 - 8.6	5.8 - 9.2
		Noise (dB)	21	27	32	35	38
450 x 375	0.0732	m cub/sec	0.2666	0.3541	0.4444	0.5333	0.6208
		Throw min-max (m) Shorter side	1.9 - 4.3	2.5 - 4.9	3.1 - 5.5	3.7 - 6.1	4.3 - 6.4
		Throw min-max (m) Longer side	2.2 - 5.2	2.8 - 5.8	3.7 - 6.4	4.3 - 7.1	4.9 - 7.7
		Noise (dB)	20	26	31	35	38
525 x 375	0.0854	m cub/sec	0.3097	0.4138	0.5166	0.6208	0.7222
		Throw min-max (m) Shorter side	1.9 - 4.3	2.5 - 4.9	3.1 - 5.5	3.7 - 6.1	4.3 - 6.4
		Throw min-max (m) Longer side	2.5 - 5.8	3.1 - 6.7	4.0 - 7.4	4.9 - 8.3	5.5 - 8.9
		Noise (dB)	21	27	32	36	40
600 x 375	0.0975	m cub/sec	0.3541	0.4722	0.5902	0.7083	0.8263
		Throw min-max (m) Shorter side	1.9 - 4.3	2.5 - 4.9	3.1 - 5.5	3.7 - 6.1	4.3 - 6.4
		Throw min-max (m) Longer side	2.8 - 6.4	3.4 - 7.4	4.3 - 8.3	5.2 - 8.9	6.1 - 9.8
		Noise (dB)	22	29	33	37	41
525 x 450	0.102	m cub/sec	0.3736	0.4958	0.6208	0.7458	0.8694
		Throw min-max (m) Shorter side	2.2 - 5.2	2.8 - 5.8	3.4 - 6.7	4.3 - 7.4	4.9 - 8.0
		Throw min-max (m) Longer side	2.5 - 5.8	3.4 - 6.7	4.0 - 7.7	4.9 - 8.6	5.8 - 9.2
		Noise (dB)	23	29	34	38	41
600 x 450	0.117	m cub/sec	0.425	0.5666	0.7083	0.85	0.9916
		Throw min-max (m) Shorter side	2.2 - 5.2	2.8 - 5.8	3.4 - 6.7	4.3 - 7.4	4.9 - 8.0
		Throw min-max (m) Longer side	2.8 - 6.4	3.7 - 7.7	4.6 - 8.6	5.5 - 9.5	6.4 - 10.1
		Noise (dB)	24	31	36	39	43
600 x 525	0.136	m cub/sec	0.4958	0.6611	0.8263	0.9916	1.1569
		Throw min-max (m) Shorter side	2.5 - 6.1	3.4 - 7.1	4.3 - 7.7	4.9 - 8.6	5.8 - 9.2
		Throw min-max (m) Longer side	2.8 - 6.7	3.7 - 8.0	4.6 - 8.9	5.5 - 9.8	6.4 - 10.4
		Noise (dB)	26	32	37	41	44

Finish

Mill aluminium

Polyester powder coating to any RAL or BS colour



Ordering codes

Example

1 - 595 x 595 O/A - CD4 - D - RAL9010

Codes

1)	Quantity		
2)	Size (mm)	(Width x height)	Neck size Use O/A suffix for overall face size
3)	Series	CD1 CD20 CD2C CD3 CD4	Louvre faced ceiling diffuser - 1 way blow Louvre faced ceiling diffuser - 2 way opposed blow Louvre faced ceiling diffuser - 2 way corner blow Louvre faced ceiling diffuser - 3 way blow Louvre faced ceiling diffuser - 4 way blow
			If size is not square and series is not CD4, please ensure S/L/R suffix is included, see page 4 for more details.
4)	Damper	D	Opposed blade damper fitted
5)	Fixings	*nothing* FH BT	No fixings, suitable for lay-in ceiling systems Countersunk fixing holes (screws supplied in same finish) Factory fitted into Burgess tile For other tile systems please contact us
6)	Blanking plates	BP...	Required blow pattern e.g. 'BP 3' to modify a diffuser to create a 3 way throw Required number of blow directions must be less than that given by the diffuser itself
7)	Neck reducer plate	NRP...	Required reduced neck size e.g. 'NRP 225mm' to reduce the active neck size of a larger diffuser to 225mm x 225mm
8)	Finish	Mill RAL... BS...	Mill aluminium Polyester powder coated to RAL... Polyester powder coated to BS...

Leave code section blank if no option is required.

Important note: Sizes given for Series CD diffusers are taken to be neck size (not nominal) unless stated.

Notes

Ventilation Direct Ltd
Unit 10
Vantage Park
Vantage Close
Sheffield
S9 1BG

Tel: 0114 350 3535

info@ventdirect.co.uk

www.ventdirect.co.uk